

ter<sub>o</sub>



The image features the word "ter" in a large, white, sans-serif font. To its right is a lowercase letter "o" with a horizontal line underneath it, serving as a subscript. A thin white curved arrow originates from the top of the "o" and points to the word "sun" in a small, white, cursive font. Another thin white curved arrow originates from the bottom of the "o" and points to the word "earth" in a small, white, cursive font.

sun

earth



# Castle of Urspelt

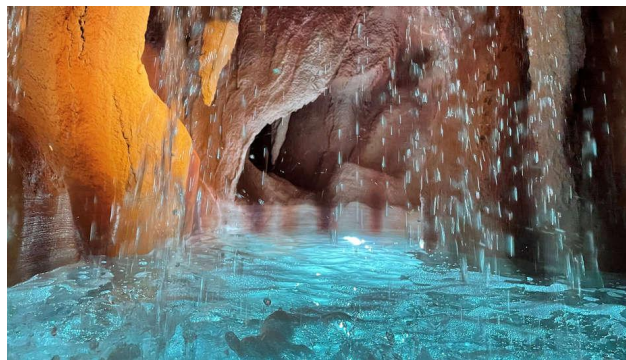
Urspelt Castle, jewel of Luxembourg's medieval heritage.

The Castle of Urspelt, a **historical gem** nestled in the heart of Luxembourg, offers a **royal getaway** in an enchanting setting.

With its medieval origins dating back to the 13th century, the castle has been **beautifully restored** to offer a harmonious blend of old-world charm and modern luxury. Its imposing towers, picturesque moat, and well-maintained gardens evoke a bygone era of knights and nobility.









A photograph of the Thermal Domain of Mondorf, featuring a large, light-colored building with a red-tiled roof and arched windows, surrounded by lush green trees and manicured gardens. In the foreground, there is a central stone path leading towards the building, flanked by symmetrical, geometric hedges and several large, rounded topiary bushes. A bronze statue of a figure stands on the path. The sky is clear and blue.

# Thermal Domain of Mondorf

Mondorf

# Thermal Domain of Mondorf

**The ambient serenity invites  
relaxation**

A true oasis of calm and well-being in the heart of a magnificent wooded park of over 40 hectares, MONDORF Domaine Thermal is ideally located just a few steps from the Moselle Valley and close to the capital.

The domain consists of two hotels, a spa, multiple aquatic leisure facilities, several restaurants, and even rooms for professional events.













# Château du pont d'oye

Habay



# Château du pont d'oye

A place of legend, a world of possibilities

Nestled in the **heart of the Ardennes forest**, the Château du Pont d'Oye is a place steeped in stories and inspiration.

Once the home of writers, artists, and thinkers, it still preserves its timeless and creative aura. Open to both **private and professional events**, it offers a unique setting for **seminars, corporate gatherings, or inspiring retreats**. At Pont d'Oye, nature, memory and beauty come together. A place of legend, a world of possibilities.









Château de Deulin

Hotton



# Château de Deulin

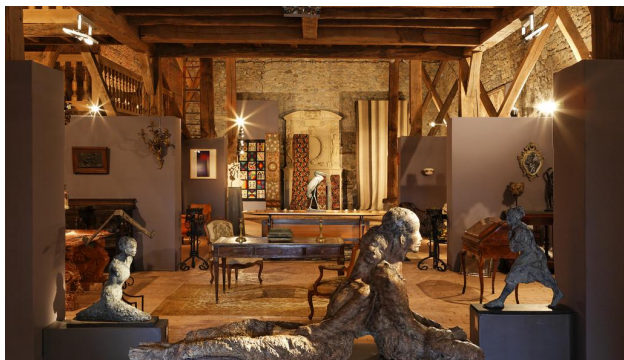
A place of heritage, a world of possibilities

The Château de Deulin is an 18th-century gem nestled in the Ourthe valley, in the Belgian **province of Luxembourg**.

Still inhabited by the same family since it was built, this private estate, steeped in history, now opens its doors to **exclusive events**, blending heritage, elegance, and authentic human connection. It offers a unique setting for **weddings**, **receptions** or intimate **business gatherings**.









Clervaux **excellence** group

Clervaux



# Clervaux excellence group

## Nature and Escape

Nestled in the Clerve valley in the heart of **the Our nature park**, Clervaux is a picturesque village full of charm. The omnipresent nature surrounding the town offers **visitors a complete change of scenery**.

Combined with its **rich cultural heritage**, Clervaux has established itself as one of **most popular tourist destinations in the Grand-Duchy**.







An aerial photograph of the Anatura Hotel in Weiswampach, Germany, taken during the golden hour of sunset. The hotel's modern, multi-story building with a stepped design is situated on the edge of a dense forest. A calm lake or pond reflects the warm orange and yellow light of the setting sun. To the left of the hotel, there is a parking lot with several cars and a road. The surrounding landscape consists of rolling green hills and fields under a hazy sky.

# Anatura Hotel

Weiswampach



# Anatura hotel

A haven of peace in the heart of Luxembourg's nature

Located on the shores of the **Weiswampach lakes** in northern Luxembourg, Anatura Luxembourg Hotel is a superior four-star establishment offering a unique experience.

Just 34 km from the Vianden chairlift, this **modern** hotel features 90 **comfortable** rooms and suites, all equipped with large bay windows and a private terrace offering **breathtaking views of the lakes** and surrounding nature.







An aerial photograph of Neumünster Abbey in Luxembourg. The abbey is a large, light-colored stone building with a prominent tall, thin spire. It is situated on a hillside, surrounded by lush green trees and other buildings. A river flows through the foreground, and a stone bridge with arches crosses it. The sky is blue with scattered white clouds.

# Neumünster Abbey

Luxembourg

# Neumünster Abbey

## One place, a thousand possibilities

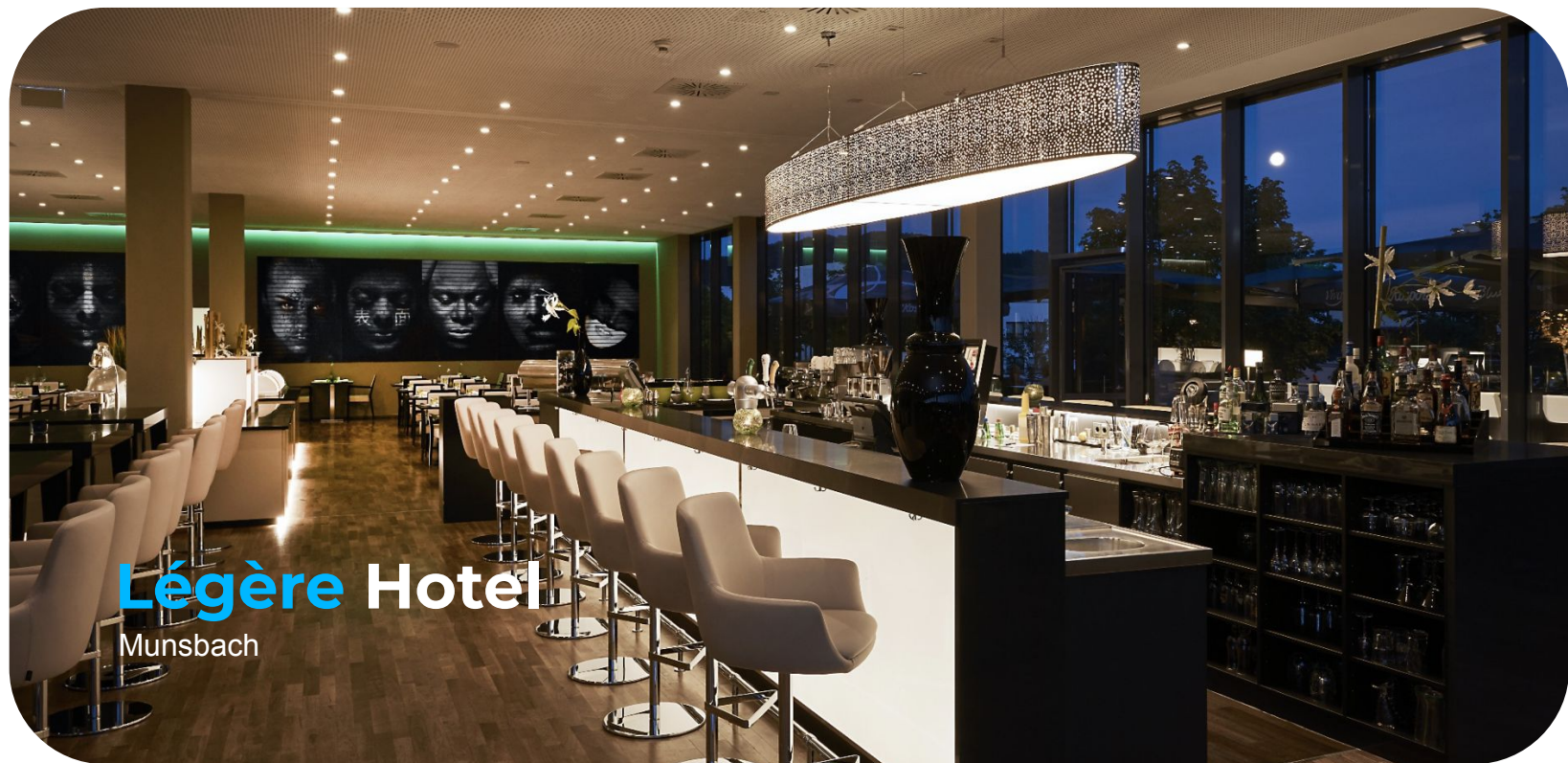
The Neumünster Abbey is a former Benedictine monastery located in the **Grund district** of Luxembourg.

Today, the abbey serves as a public meeting place, a cultural center, and a venue for various events. It offers **countless possibilities**, ranging from music to theater, as well as artist residencies and conferences.









**Légère Hotel**  
Munsbach



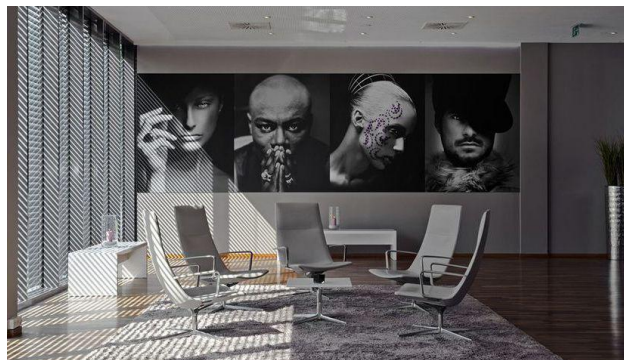
# Légère Hotel

## A superb modern four-star hotel

Installed in a welcoming environment, the **Légère Hotel** Luxembourg is located in Munsbach, a **15-minute drive from the city center of Luxembourg**. It offers modern rooms and suites, free Wi-Fi, and spa facilities including a **gym** and a **sauna**.

The Légère is situated in the **green setting** of the Munsbach business park.







**they**  
**trust us**

**Bilia-Emond**

**BANQUE DE LUXEMBOURG**

**BERNARD-MASSARD**  
MAISON FONDÉE  
1921

**Degroof  
Petercam**

**GARAGE  
INTINI**  
DEPUIS 1971

**INOWAI**  
PROPERTY PARTNERS

**LOMBARD  
INTERNATIONA  
ASSURANCE**

**bpi** URBAIN SHARES  
FOR GOOD

**CLIFFORD  
CHANCE**

**Forbes**

**FAMILY PARTNERS**  
YES TO YOUR BUSINESS

**CBRE**

**LUXEMPART**  
GROWING TOGETHER

**ArcelorMittal**

**LOMBARD ODIER**  
LOMBARD ODIER BANKER PARTNER

**CHANEL**

**alterDomus\***

**PICTET**  
1803

**POST**  
COMMUNICATION

**EY**

**MediaMark**

**STATEC**  
Luxembourg

**Jan De Nul**  
GROUP

**pwc**

**ING**

**KPMG**

**INCERT**

**INDOSUEZ**  
WEALTH MANAGEMENT

**Deloitte.**

**eurocom  
networks**  
Connect and  
Simplify

**beAngels**

**ATOZ**  
TAX ADVISORS LUXEMBOURG

**BIL**  
SAVOIR  
MANAGERIAL  
À LUXEMBOURG

**amazon**

**alfi**



**Tanguy** Deschamps

Tero Luxembourg Commercial Director

+352 671 315 015 | [venues@tero.lu](mailto:venues@tero.lu) | [www.tero.lu/venues](http://www.tero.lu/venues)